

INSULATED HANDLE / TRIPOD

- Mounts directly to Models 8712, 8511 and 8513
- Mounts to Model 8718B when used with Adaptor
- Improves isolation between the operator and the meter when making low frequency (<10 MHz) measurements



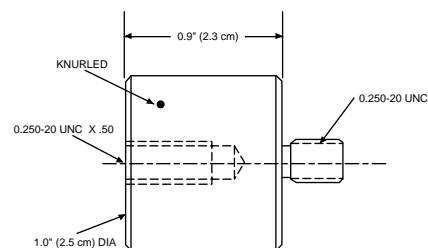
DESCRIPTION

This insulated handle/tripod, P/N 21797900, significantly improves measurement accuracy when making measurements at lower frequencies. Problems with reflections off the body that begin to appear at about 300 MHz increase as you move into lower frequencies and are especially a problem below 10 MHz. The basic insulated handle, which can also function as a short tripod, isolates the human body from the meter.

TRIPOD ADAPTER FOR MODEL 8718B

DESCRIPTION

The adaptor, P/N 32595900, is used to extend the mounting hole of the model 8718B below the bottom of the meter. This stainless steel part is used with the insulated handle P/N 21797900 and large tripods.



Adaptor, P/N 32595900